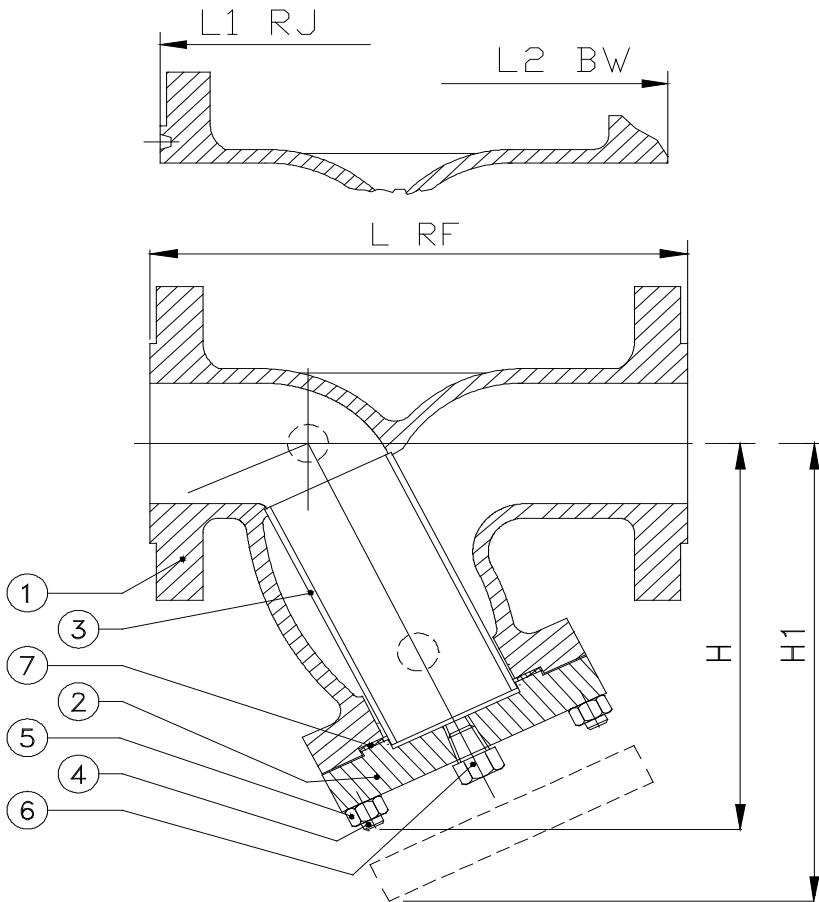


Art. 650 FILTRI SERIE ANSI 150
Strainers Valves series ANSI 150



DN	L RF	L1 RJ	L2 BW	H	H1	V
2"	8,00	8 ½	8,00	8,00	13 ¾	
50	203	216	203	200	350	
2"½	8 ½	9,00	8 ½	9,00		
65	216	229	216	220		
3"	9 ½	10,00	9 ½	10,00	16 ½	
80	241	12	241	250	420	
4"	11 ½	12,00	11 ½	12 ½	19 ¼	
100	292	305	292	320	490	
6"	16,00	14 ½	16,00	14 ½	23 ½	
150	406	368	406	370	595	
8"	19 ½	20,00	19 ½	19,00	30 ⅝	
200	495	508	495	480	765	
10"	24 ½	25,00	24 ½	23,00	35 ⅞	
250	622	635	622	590	910	
12"	27 ½	28,00	27 ½	28,00	38 ⅞	
300	698	711	698	720	970	
14"	31,00	31 ½	31,00	28,00	46,00	
350	787	800	787	720	1170	
16"	36,00	36 ½	36,00	31 ½	59,00	
400	914	927	914	800	1500	
18"						
450						
20"						
500						
24"						
600						
26"						
650						
28"						
700						
30"						
750						
36"						
900						
40"						
1000						
42"						
1050						
48"						
1200						
64"						
1600						

POS	DENOMINAZIONE - Part list	MATERIALI - Materials
1	CORPO Body	ASTM A216 WCB
2	COPERCHIO Bonnet	ASTM A216 WCB
3	CESTELLO Screen	AISI 304
4	PRIGIONIERI Bolt	ASTM A193 B7
5	DADI Nut	ASTM A194 2H
6	TAPPO Plug	ASTM A182 304
7	GUARNIZIONE Gasket	GRAPHITE+F316
8		
9		
10		
11		
12		
13		
14		
15		
16		
17		
18		
19		
20		
21		
22		
23		
24		
25		
26		